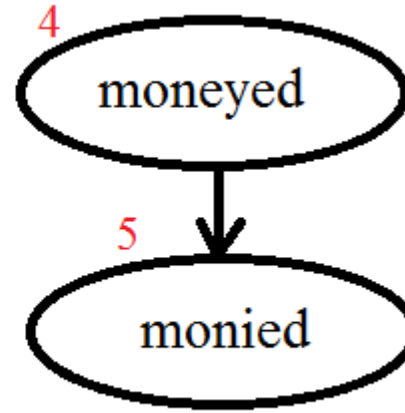
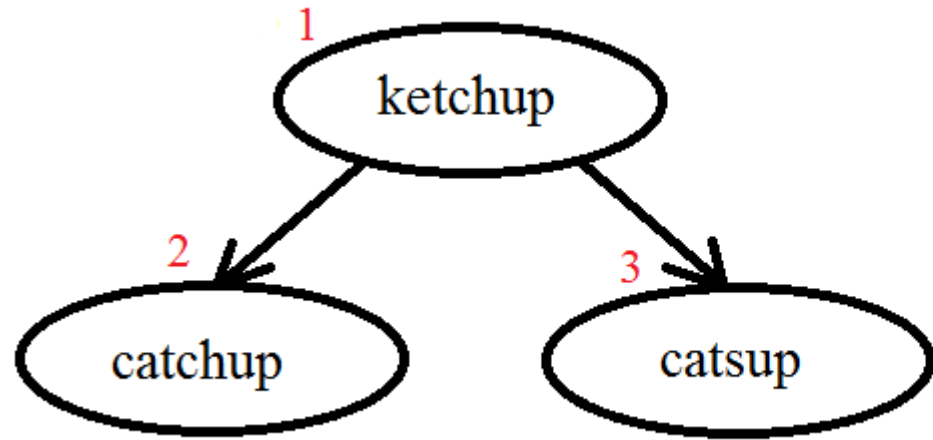




# Welcome back to Home Learning Spellings with Mrs Andrews





?

I hope you had a good week!

I did!

**and now ... it is time to do some spellings!**

# This half term, is recap half term!

- **This half term, we are going to recap the spelling principles that you either learnt with your class teachers or with me during your Home Learning. I will be referring you back to the previous Home Learning power points when we are discussing the spelling principles.**
- **This week we are going to focus on the prefixes 'super' and 'auto' which you learnt with your class teachers in February.**



# Prefixes



- So we know from last time that a prefix is a letter or a group of letters added to the front of a root word to change the meaning of the word.
- They are not words in their own right!
- The root word always stays the same when the prefix is added to the front.
- **What do the prefixes 'super' and 'auto' do the meaning of the word when they are added to the front of the root word?**

# The Prefix super-

Below are some examples of words that use the prefix **super-**. Using their definitions, can you figure out what the prefix **super-** must mean?

**supernatural**



Something that has greater than normal natural powers.

**superhero**



Cartoon characters who have extraordinary powers.

**supernova**



A star that suddenly increases greatly in brightness because of a large explosion.

From these examples, what does the prefix **super-** mean?

Can you think of any other examples of words that use the prefix **super-**?



## Prefix 'super'



- The prefix **super-** means 'better than', 'greater', 'more than' or above or 'surface'.
- E.G.
- Prefix 'super' + root word 'man' = new word 'superman'
- For example:
- **superwoman, superwoman, superior, supernatural,**
- **supermarket, superstar**



# The Prefix auto-

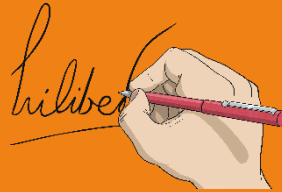
Below are some examples of words that use the prefix **auto-**. Using their definitions, can you figure out what the prefix **auto-** must mean?

**automatic**



Something that works by itself with little or no direct human control.

**autograph**



Something which is written by the author themselves.

**autobiography**



The history of a person which is written by the person themselves.

From these examples, what does the prefix **auto-** mean?

Can you think of any other examples of words that use the prefix **auto-**?



## Prefix 'auto'



- The prefix **auto-** means '**self** or '**own**'.
- E.G.
- Prefix 'auto' + root word 'graph' = new word 'autograph'
- For example:
- **Automatic** and **autobiography**





# The Human Dictionary Challenge

Now that you know the meaning of these prefixes, can you use your knowledge to figure out what the following words must mean?

**superhuman**

He had superhuman strength.



**Superhuman** means having exceptional ability or powers; more than any normal human would have.

**autopilot**

The captain turned on the autopilot.



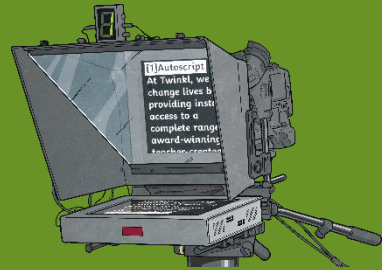
**Autopilot** is a device which keeps an aeroplane flying the right way, without the pilot controlling it.

# The Human Dictionary Challenge Part 2

This time, you've been given the meaning of a word. Using its meaning, can you figure out which prefix the word must start with?

\_\_\_\_\_cue

He read off the \_\_\_\_\_cue.



An \_\_\_\_\_cue is a device that projects words onto a screen so that people can read them whilst being filmed.

\_\_\_\_\_sonic

Concorde was the first \_\_\_\_\_sonic passenger plane.



If something is \_\_\_\_\_sonic, it travels at a speed which is greater than the speed of sound.

# super- or auto- Quick Quiz

Take a quiz to see if you are an expert!

**Which is correct?**



supermarket

automarket

# super- or auto- Quick Quiz

Take a quiz to see if you are an expert!

**Which is correct?**



superpilot

autopilot

# super-, auto- Quick Quiz

Take a quiz to see if you are an expert!

**Which is correct?**



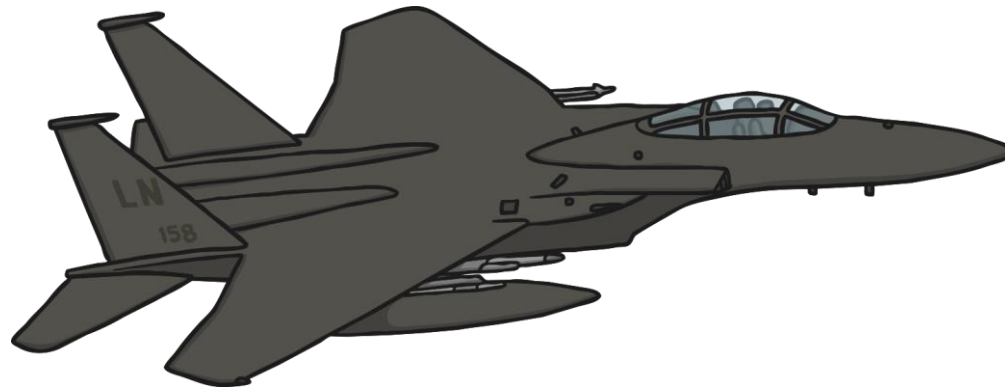
superstar

autostar

# super- or auto- Quick Quiz

Take a quiz to see if you are an expert!

**Which is correct?**



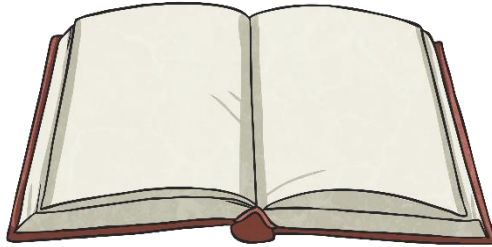
supersonic

autosonic

# super- or auto- Quick Quiz

Take a quiz to see if you are an expert!

**Which is correct?**



superbiography



autobiography

# Your 10 'super' and 'auto' Spelling Words...

- autobiography
- automobile
- autopilot
- autograph
- automatic
- supermarket
- superwoman
- superstar
- superficial
- supernatural





# Your turn to do some spelling activities.



## Prefixes, Root words and Definitions

- Cut out each section and add the prefix to the correct root and the definition
- Answers attached

## Across and Down

- Write each of your 10 spelling words across and then down
- (Starting with the first letter).
- Examples-
- s u p e r s t a r
- u
- p
- e
- r
- s
- t
- a
- r

# Your turn to do your handwriting task

On a sheet of paper, choose 6 tricky spelling words, and put them into a sentence so you can practise your handwriting as well as writing sentences that make sense.

autobiography  
automobile  
autopilot  
autograph  
automatic  
supermarket  
superwoman  
superstar  
superficial  
supernatural

A a B b C c D d E e F f G g H h I i J j K k L l M m N n O o P p Q q R r S s T t U u V v W w X x Y y Z z



Goodbye