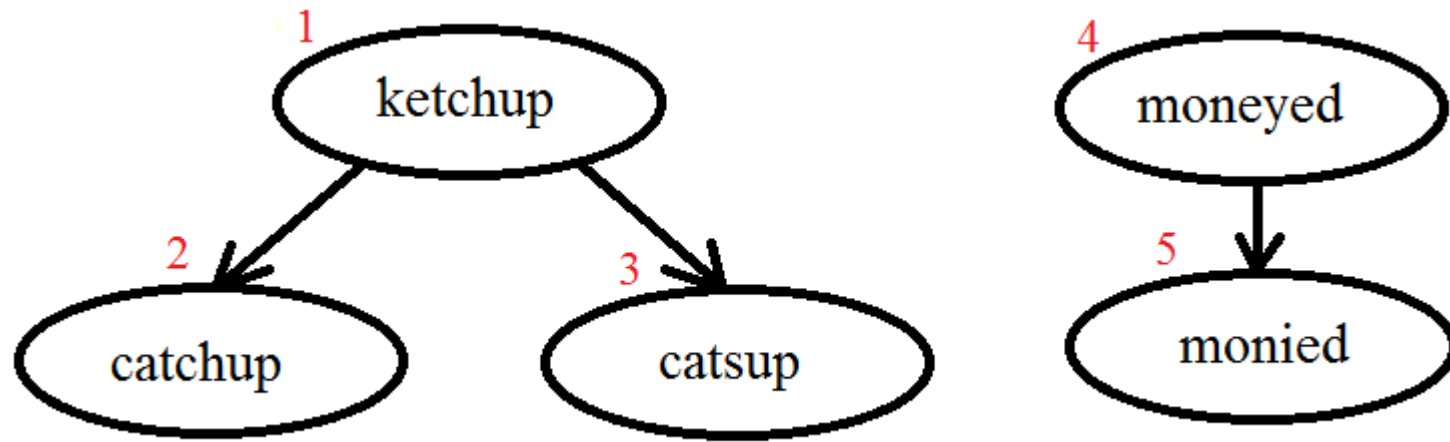


WELCOME

WELCOME

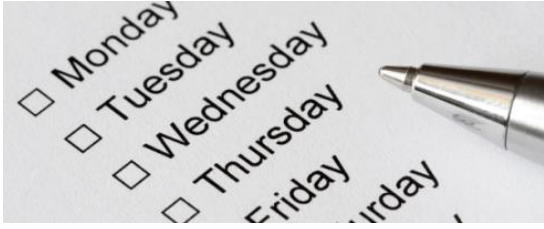
welcome back Year 6 to Home Learning Spellings with Mrs Andrews



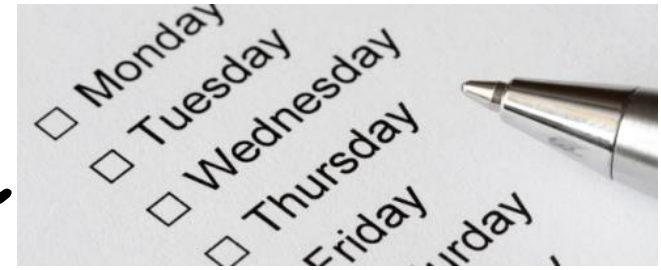


I hope you have had a good half term holiday. I did.

and now ... it is time to do some spellings!



Every Week

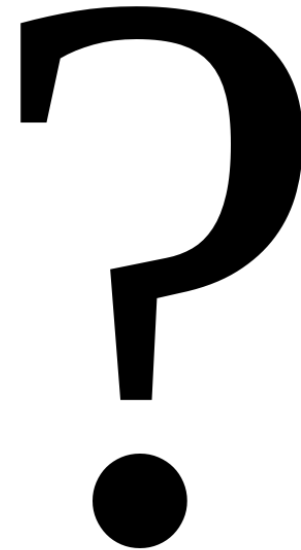


- **Every week**, I will send you:
- a Power Point which will be linked to your Year 6 main focus words and spelling principle.
- 1 task worksheet (with an answer sheet if appropriate) **AND**
- **If possible on a PC or tablet or smart phone**, an on-line task(s) such as spellingframe.co.uk/spelling-rule or another task.
- You are required to do **both** tasks if possible because the more you do, the better you will become at spelling, reading and writing!

Warm Up:

Discuss with a parent or older sibling the difference between the meanings of these homophones?

morning and mourning
passed and past



Answers to the homophones



- morning: before noon
- mourning: grieving for someone who has died
- past: noun or adjective referring to a previous time (e.g. In the past) or preposition or adverb showing place (e.g. he walked past me)
- passed: past tense of the verb 'pass' (e.g. I passed him in the road)

To Learn how to spell more words with Silent Letters

- Can you think of any words with silent letters from last time (i.e. letters whose presence cannot be predicted from the pronunciation of the word)?
- If so, say them out loud or write them down.



So last time, we looked at words with the silent 'k', 'b' and 'n'

- knight, knuckle, knot
- solemn, autumn, column
- doubt, lamb, debt, thumb

- This week we are going to look at some more words with silent letters but be warned they are many words with silent letters which you may come into contact with when you read.
- As part of the resources for this week, I have attached a word mat of common silent letter words for you to have a look at when you have time.

This week, we are going to look at ...

- Sometimes, the words may have more than one sneaky silent letter!
- Can you spot the silent letters in these words?

thistle



island



spaghetti



Words with Silent Letters 't', 's', and 'h'

thistle



island



spaghetti



There are many words with these silent letters but we are going to look at a few which you will just have to learn. Sorry!

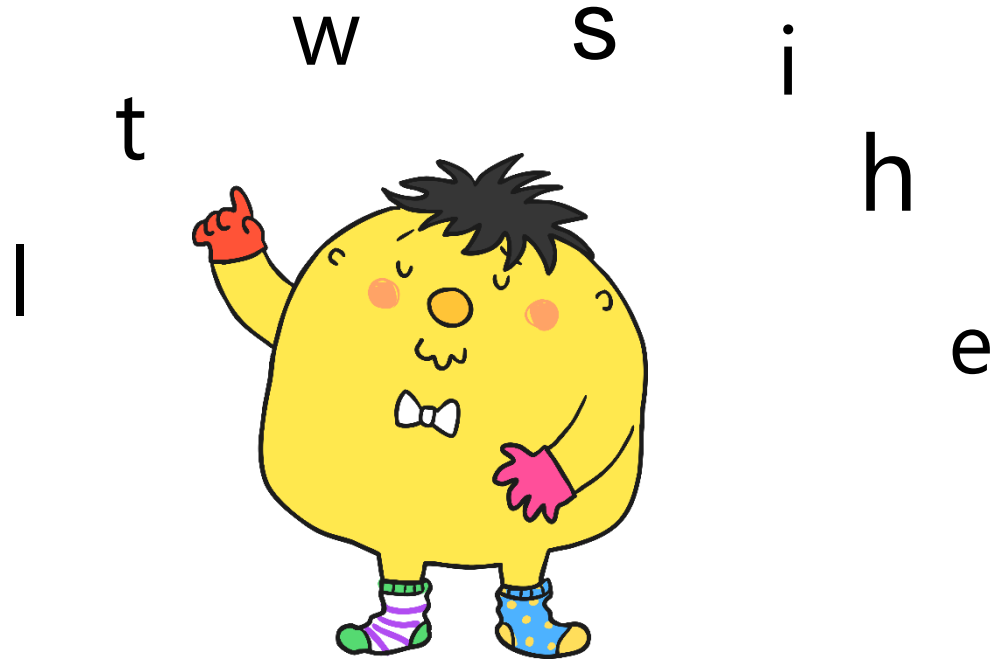


To refresh your memory, let's watch this BBC Bite size clip again.

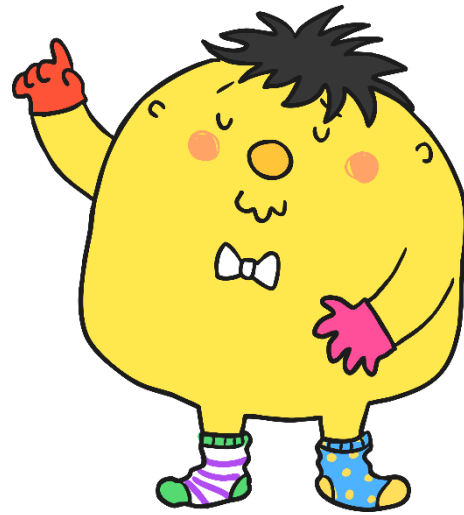
- <https://www.bbc.co.uk/bitesize/topics/zcgv39q/articles/zy4fdxs>
- Silent letters are letters that can't be heard when the word is spoken.
- For example in the word 'sword', you don't pronounce the letter 'w'. And the letter 'h' is silent in the word 'ghost'.
- There are lots more examples of words with silent letters in English. So keep an eye out for them, because you won't be able to hear them!



Mr Whoops has been juggling with some of your spelling words for this week. Can you work with an adult or on your own to figure out what they might be? Don't forget that they'll all contain a silent 't', silent 'h' or silent 's'.

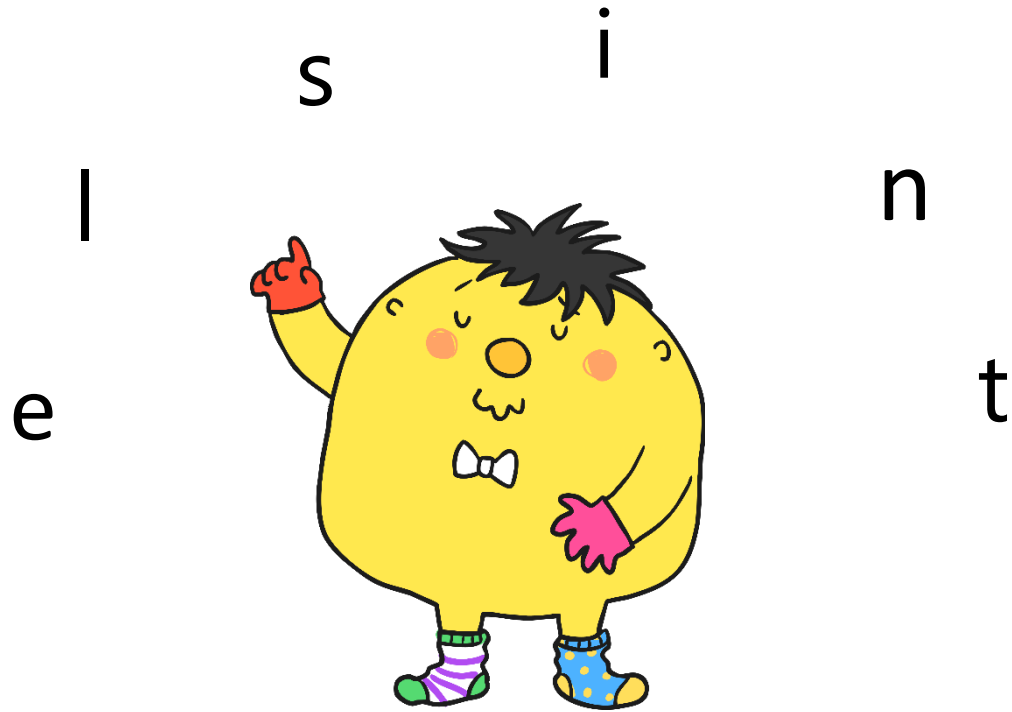


The answer is ...whistle



But whistle has more than 1 silent letter.
w h i s t l e ! Sneaky!

Can you work out the words, they all contain a silent 't', silent 'h' or silent 'n'.

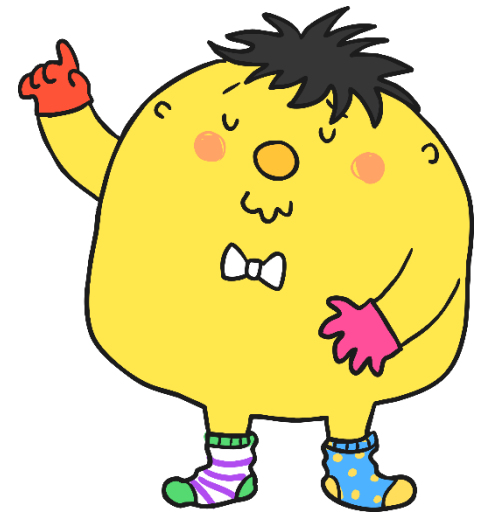


The answer is... listen

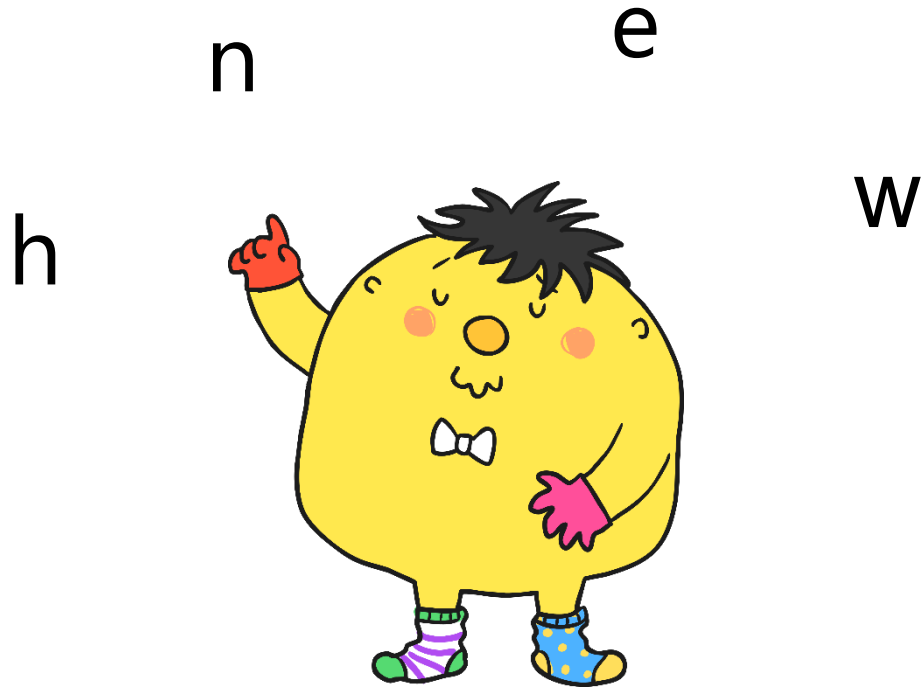
- Another way to remember listen is to divide the word into 2 sounds / words



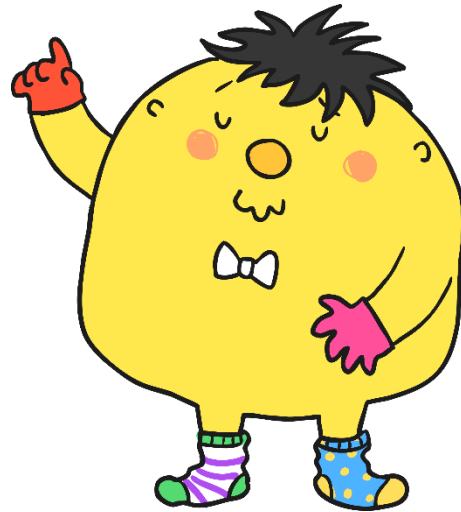
lis ten



Can you work out the words, they all contain a silent 't', silent 'h' or silent 's'.



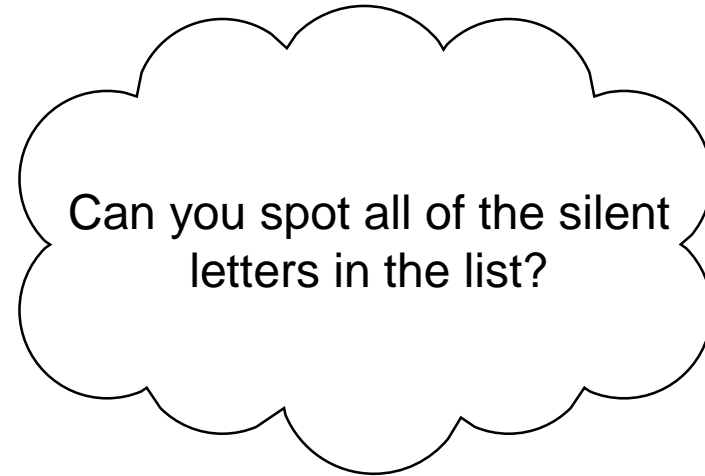
Then answer is ...when



NOT wen! It needs a 'h' = when

What do you focus words mean? Talk to a partner or look up the words in a dictionary.

- when
- where
- thistle
- whistle
- island
- listen
- echo
- honest
- spaghetti
- isle

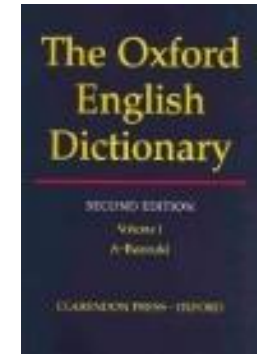


Say these words out loud.

What do these words mean?

Can you work out what these words mean from the sentences?

- when = (conjunction) I really enjoyed spelling when I was in school.
- where = (adverb) Where do you live?
- thistle = The thistle plant is the Scottish National Emblem.
- whistle = The teacher blew the whistle at the end of break time.
- island = The Isle of Wight is an island. It is surrounded by the sea.
- listen = You listen using your ears.
- echo = You could hear the echo of his footsteps in the cave coming closer and closer.
- honest = Being honest is important.
- spaghetti = The Italians invented spaghetti.
- isle = An isle is an island but is often very small. Whereas aisle is a passageway such as a supermarket aisle (homophone and it also has a silent 'a'!).





Your Turn



Rainbow Writing

- Using this weeks focus words, first write each word in pencil. Then trace over each word three times. Each time you trace, you must use a **DIFFERENT** colour crayon or pen. Trace neatly and you will see a rainbow! Be creative!



- **On-line Spelling Frame**

- Please type in Spelling Frame in your browser, select Year 5 and 6, Rule 47 (silent letters).
- OR Copy and paste the below link into your browser.
- <https://spellingframe.co.uk/spelling-rule/40/47-Words-with-silent-letters-i.e.-letters-whose-presence-cannot-be-predicted-from-the-pronunciation-of-the-word>
- Select Spelling Tiles
- Select Segment Sorting and Segment Puzzle. and the free game, if you have time.
- You will need to use your focus words from last week and this week.

Goodbye