



Shirley Schools



Weekly Communication

To contact any member of staff, please email
office@shirleyschools.co.uk
marked for the attention of the member of staff and your email will be
forwarded.

Friday 13th January 2023

Dear Parents and Carers,

Please find attached to the school website the following letters;

- Shirley Schools Behaviour and Relationships Letter
- Shirley Schools Understanding Zones of Regulation
- Shirley Schools Dinner Menu
- Shirley Junior Year 3 Sleepover slides
- Shirley Junior Year 3 Curriculum slides
- Shirley Junior Year 4 Curriculum Letter
- Shirley Junior Year 5 Curriculum slides
- Shirley Junior Year 6 Curriculum slides
-

MEDICINE REMINDER

If you send your child to school with any medicine for headaches, coughs, colds, indigestion etc, please make sure it is signed in at the school office.

Please find the links to the letter pages on our websites:

[Infant School Letters Link](#)

[Junior School Letters Link](#)

Dates for your Diary

Shirley Infant School

JANUARY

Tuesday 17th

Friday 27th

Monday 30th

Tuesday 31st

FOSIS Bags 2 School

INSET DAY - School closed to pupils

INSET DAY - School closed to Pupils

Parent workshops on behaviour and relationships in school - **Virtual event 12:30-1:30pm**

FEBRUARY

Thursday 2nd

Friday 3rd

Tuesday 7th

Thursday 9th

Friday 10th

13th—17th

Monday 20th

Wednesday 22nd

Thursday 23rd

Thursday 23rd

Year 1 Celebration Event 2.45pm in classroom

Year 2 Home Learning due

Year 1 Fire Visit - on site

Year R Celebration Event 2.45pm in classroom

School closes for Half Term

HALF TERM

School re-opens for SPRING 2

Year 2 Great Fire of London - on site

Year R Mill Cottage - on site

Year 1 Manor Farm - off site

Shirley Junior School

JANUARY

Tuesday 17th

Thursday 19th

Monday 23rd

Thursday 26th

Friday 27th

Monday 30th

PTA Bags 2 School

Year 5 Swimming Arctic Foxes

Young Voices - off site

Year 5 Swimming Arctic Foxes

INSET DAY - School closed to pupils

INSET DAY - School closed to pupils

FEBRUARY

Thursday 2nd

Thursday 2nd

Thursday 2nd

Friday 3rd

Thursday 9th

Thursday 9th

Friday 10th

Friday 10th

13th—17th HALF TERM

Monday 20th

Thursday 23rd

Share my learning 8.45am & 3.20pm in classrooms

Year 5 Swimming Arctic Foxes

Year 4 Fishbourne Roman Palace - off site

PTA Quiz

Year 3 Sleep over and light party - on site

Year 5 Swimming Arctic Foxes

PTA Cake Sale

School closes for Half Term

School re-opens for SPRING 2

Year 5 Swimming Siberian Husky

In light of the announcement of His Majesty's coronation on Saturday 6 May 2023, an additional bank holiday has been announced on Monday 8 May. Settings that are normally closed on a bank holiday should close on this day. This will include schools and colleges.

Coming soon

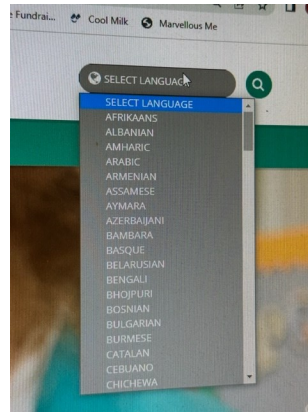
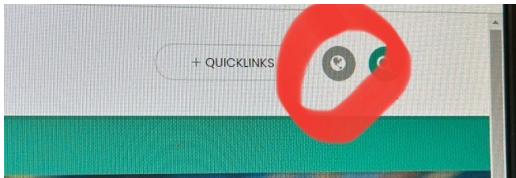
Parents Evening dates - Spring 2

Take a look!

On our website this week take a look at:

The translation icon on both Shirley Schools websites.

This is located on the top right; globe icon, select language.



Shirley Schools Behaviour and relationships in school

Please find attached and on our website:-

[Behaviour and Relationships Letter](#)

[Understanding Zones of Regulation](#)

Following on from our renewed Behaviour and Relationship policy in September, we would like to know if there are any aspects you would like more information on, or support in understanding.

Please complete this online form - <https://forms.gle/Pdx4WFmDwQTib9hW8>

The deadline for this is Friday 20th January.

Shirley Infant School Parent Survey January 2023

Shirley Infant School values feedback from parents and carers as part of the continuous improvement of our school. To support this, we have created a google form survey (link below) which we would kindly ask if you could complete by 23rd January 2023.

Your views are very much appreciated.

<https://forms.gle/WvWMot43RbRsk9SE9>

Reminder

Thursday 19th January - Chinese New Year menu Order on School grid

新年快乐

CHINESE NEW YEAR

THURSDAY 19TH JANUARY

MAINS

- SWEET & SOUR CHICKEN (GF)
- CHINESE STIR FRIED RICE & VEGETABLES (VG) (GF)
- CRISPY FISH BITES WITH CHINESE CURRY SAUCE
- JACKET POTATO

SIDES

- BOILED RICE
- STEAMED BROCCOLI & SWEETCORN
- STIR FRY VEGETABLE MEDLEY

DESSERTS

- PINEAPPLE UPSIDE DOWN CAKE & CUSTARD
- CHINESE COOKIE

dolce

Safeguarding

At National Online Safety, we believe in empowering parents, carers and trusted adults with the information to hold an informed conversation about online safety with their children, should they feel it is needed. This guide focuses on one of many devices which we believe trusted adults should be aware of. Please visit www.nationalonlinesafety.com for further guides, hints and tips for adults.

What Parents & Carers Need to Know about GOOGLE CHROMEBOOK

Google Chromebooks were first introduced in 2011 as a budget-friendly alternative to Windows laptops. They have a cloud-based desktop operating system created by Google that performs internet-based tasks simply and quickly. Although primarily optimised for Google apps – such as Gmail and Google Drive – newer devices also support Android apps and offer a range of parental controls via the Google Family Link tool. Nonetheless, whilst these tools are comprehensive, there are some limitations which means there are a number of risks trusted adults should be aware of.

SETTING UP

SET UP FAMILY LINK

To do this, first install the "Google Family Link" app on your smartphone to set up an account for your child. If you're setting up a new account, it's important you follow the setup process and sign in with your parent account, as this has access to special privileges. Once this is done, you can add your child's account to the Chromebook.

DISABLE GUEST MODE

If "Guest mode" or the ability to add new users is available, your child may be able to bypass the Chromebook's parental controls. To disable this, sign into the Chromebook with your parent account, head to "Settings > Manage other people" and turn on "Restrict sign-in to the following users" – from there, you'll be able to turn off the "guest browsing" feature.

SET UP PARENTAL CONTROLS

In your child's account, head to "Settings > People > Parental controls set up" to begin the process. This will confirm the child's account you want to enable parental controls for and will list the devices that can be protected. You'll then be asked to enter the email and password, before being prompted to ask your child to confirm the supervision via their password.

WHAT ARE THE RISKS?

ONLINE, ALL THE TIME

As "internet-first" devices, Google Chromebooks are reliant on a Wi-Fi connection, with only limited support for offline tasks. This means your child has access to the internet at all times, with an enduring risk of being exposed to online harm, particularly as Family Link is only able to block most inappropriate content. Even if your child isn't searching for inappropriate websites and information, there's always the chance that they might see something that could upset them.

ADDICTIVE NATURE

Like most technology, laptops are addictive in nature, and you might find your child spending too long staring at their Chromebook – particularly given its support for Android apps, such as games and social media platforms. This could lead to irritability, mood swings and a loss of interest in more important tasks.

BEWARE OF MALWARE

Although Google's Chrome OS features a number of built-in security measures, that doesn't fully eliminate the risk of malware, which can be downloaded onto the machine via phishing emails or from downloading malware-laced content. This should be a particular concern if your child is taking their laptop into school, as the malware could find itself entering the school's network and infecting other pupils' laptops.

Advice for Parents & Carers

There are a number of safety features that you can enable to keep your child safe while using Google Chromebook:

- 1 Disable guest mode and control who can sign into your child's Chromebook
- 2 Restrict or block access to apps from the Chrome Web Store and the Google Play Store
- 3 Disable Incognito Mode so you can always track what sites your child has been on.
- 4 Manage the websites your children can visit on Chrome
- 5 Limit your child's ability to grant permissions to websites
- 6 Check Family Link to ensure the Chrome browser default is set to block sexually explicit and violent sites from being shown to children
- 7 Set bedtimes, screen-time limits, and lock devices when not in use

Meet Our Expert

Carly Page is an experienced technology journalist with a track record of more than 10 years in the industry. Previously the editor of tech tabloid *The Inquirer*, Carly is now a freelance technology journalist, editor and consultant.



NOS
National
Online
Safety®
#WakeUpWednesday

Sources: <https://about.instagram.com/blog/announcements/introducing-family-center-and-supervision-tools> | https://about.instagram.com/en_US/blog/ | <https://about.instagram.com/blog/announcements/introducing-family-center-and-supervision-tools> | <https://about.instagram.com/blog/announcements/introducing-reels-and-shop-tabs>



www.nationalonlinesafety.com



@natonlinesafety



/NationalOnlineSafety



@nationalonlinesafety

Users of this guide do so at their own discretion. No liability is entered into. Current as of the date of release: 24.08.2022

FOSIS/PTFA

BAG 2 SCHOOL COLLECTION – BY 17 JANUARY



Having a post-Christmas clear out? ... please bring (bagged) any unwanted clothes, shoes, bags, soft toys, sheets, towels to 1 Branksome Avenue anytime **before 9am on Tuesday 17 January**, and raise money for our school in the process.

For more info on Bag2School see here - [Bag 2 School](#)
We are also collecting plastic tubs from chocolates for recycling (Heroes, Celebrations, Roses etc) – drop to 1 Branksome Avenue by 17 Jan too! Please keep separate from Bag 2 School donations.

UNWANTED GIFTS FOR ELFRIDGES



If you have any unwanted Christmas gifts suitable for Elfridges next Christmas, please drop in the basket outside 1 Branksome Avenue (labelled clearly for Elfridges)

UPCOMING EVENTS...



JUNIOR QUIZ NIGHT – FRIDAY 3 FEB

Our adult quiz night is back, so get your teams of 8 ready ... more details on venue and where to purchase your tickets coming soon!

DON'T FORGET ...



Our school lottery raises money directly for the **Junior School**. Every week there is a guaranteed cash prize for someone from the school. This prize money goes up the more tickets we sell. You are also automatically entered into the national draw where you could win £25,000! The tickets cost just £1 each week.

Sign up here: <https://www.yourschoollottery.co.uk/lottery/school/shirley-junior-school>



If you are **shopping online**, please click on these links first. They then donate to the school at **NO EXTRA COST TO YOU**. Amazon = <https://smile.amazon.co.uk/>
Infants – choose Friends of Shirley Infant School
Juniors - choose Shirley Junior School PTA

Online shopping from bread to bathrooms, use Easyfundrasing, sign up here:
[Infants – Friends of Shirley Infants – Southampton](#)
[Juniors – Shirley Junior School PTFA – Southampton](#)

STAY CONNECTED AND GET INVOLVED...

Our website pages:

FOSIS – [Friends of Shirley Infant School - Shirley Infant School](#)

PTFA – [PTFA - Shirley Junior School](#)

On Facebook through the private year groups – please remember that these groups are managed by parents and not run by the school:

Infants

Year 2 Face book group - <https://www.facebook.com/groups/849370902208557>

Year 1 Facebook group - <https://www.facebook.com/groups/774368666506974>

Year R Facebook group - <https://www.facebook.com/groups/1150736922357432>

Juniors

Parents of Year 6 Face book group - <https://www.facebook.com/groups/1716707195249069>

Parents of Year 5 Face book group - <https://www.facebook.com/groups/649407131910961>

Parents of Year 4 Face book group - <https://www.facebook.com/groups/137311320449399>

Parents of Year 3 Face book group - <https://www.facebook.com/groups/172919936937823>

Community Information



Creativity, Ambition, Kindness & Engagement
at our Award Winning Dance School

It's the perfect time to book your January Trial class in one of our fabulous Ballet, Tap, Modern, Contemporary, Street or Pilates classes and spring in to Competitively priced lessons with our qualified teachers.

SDA are proud to offer our Star Awards scheme - free for all students - alongside opportunities to perform and take exams.

Visit www.southamptondanceacademy.com
or WhatsApp Chrissy on 07944287902

2021 Bronze Award winners in the Dance School of the Year awards



Join us on Sunday 22nd January from 12pm to enjoy FREE celebrations.

2023 is the year of the Rabbit and The Chinese Association of Southampton will be back to entertain all with FREE traditional Chinese performances and activities including the much loved Lion Dance, martial arts, singing and calligraphy and lantern making workshops. You can find the stage and activities on Level 2.

Activities will take place from 12pm – 4pm. Click [here](#) to view the full schedule. Happy Chinese New Year to all our customers!



The banner for the Chinese New Year Festival 2023 in Southampton features a large, colorful dragon head on the left. The text in the center reads: "Chinese New Year Festival 2023 Southampton", "Sunday 22nd January: Guildhall Square & Westquay Shopping Centre", and "Sunday 5th February: Guildhall Square & JHG". Logos for Southampton City Council, John Hansard Gallery, Westquay Southampton, and the Chinese Association of Southampton (南安普敦華人協會) are visible. A URL "https://www.southamptonchinese.org.uk/cny2023" is provided. The bottom right corner contains a collage of images showing various traditional Chinese performances like lion dance, martial arts, and calligraphy.

Cost of Living Community Drop In

[SO:Linked](#) are teaming up with the council to host three drop in events in Southampton Libraries, to connect local residents to services offering cost of living support. Working in close partnership with voluntary and community organisations we hope to connect people to services who can make a difference during this challenging time.

From mental health and well-being support to financial guidance and informative services, the drop-in events, held at Central Library (16 Jan), Woolston Library (23 Jan) and Shirley Library (30 Jan), will run from 11am to 2pm. Each library is also a 'warm space' and residents are welcome to use this facility for refreshment and warmth after each event.

[You can find out more about warm spaces here.](#)



Need support and advice during the cost of living crisis?

SO:Linked and Southampton City Council are holding a series of drop-in community events across Southampton which offer advice and guidance for people alongside a community market place of local organisations which can offer support.

Monday 16th Jan from 11am - 2pm
Central Library, Civic Centre, Southampton SO14 7LW

Monday 23rd Jan from 11am - 2pm
Woolston Library, Centenary Quay, Victoria Rd, SO19 9EF

Monday 30th Jan from 11am - 2pm
Shirley Library, Shirley Precinct, Shirley, SO15 5LL



Community & Family Fun Session

Come along and join our free fun interactive activities for all the family. Parents/carers and their children can enjoy age specific activities including; interactive campus tours, arts and crafts, an insight from a current undergraduate student and interactive workshops. Free tasty refreshments will be available.

This on campus (SO14OYN) event takes place on **28th January 2023 between 09:30 – 12:30** and can be booked via this link: <https://gck.fm/lpwpb>. Full details are available [here](#).

Let's Talk Mental Health Online Series

To recognise **Children's Mental Health Week** (6-12 February 2023) Solent University have teamed up with the Solent Mind Charity to offer free mental health workshops to support young people and their parents and carers. Each of the 90-minute online sessions will include information, tools and strategies to help identify potential health issues, guidance on where to get advice and support and approaches to looking after your own mental health and wellbeing. We will also be giving attendees the opportunity to put their questions to a specialist panel of mental health and student support professionals.

7th February 2023, 17.30pm – 19.30pm – Let's Talk Mental Health: Parents and carers – book via this link: <https://gck.fm/xhnsb> Full details are available [here](#).

8th February 2023, 16:30pm – 18.00pm – Let's Talk Mental Health: Students (Years 10 – 13) – book via this link: <https://gck.fm/xhnsb> Full details are available [here](#).

Where possible please share details of these events with your community. I have attached poster (below) which can also be shared via social media. Thank you for your continued support, if you have any queries please do not hesitate to get in touch.

making
music

Saturday 21st January 2023

Performances at 11.00am & 2.00pm

Central Hall, Southampton

City of Southampton Orchestra Presents:

Bear Hunt

With the
New Forest School of Dance

Conductor: John Truill

Narrator: Phil Cheesman



Join us for fantastic family entertainment
in a concert full of bears of all shapes and sizes.

Music to include: "We're Going on a Bear Hunt",
"Teddy Bear's Picnic" and "The Three Bears"

Come and meet **Bernie** the orchestra mascot!

Why not bring along your
favourite teddy too?



Tickets available from Ticketsource
www.ticketsource.co.uk

£8 Adult

£5 Child

£25 Family (2 Adults 2 Children)

www.csorchestra.org

 @cityofsotonorch

 /cityofsotonorch

:cso

City of Southampton
Orchestra
Celebrating 50 Years