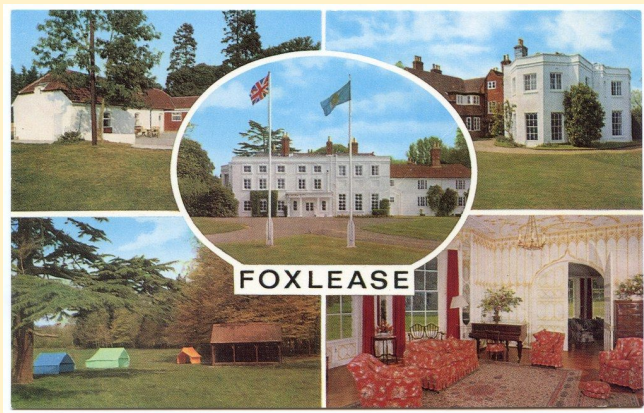




# Foxlease

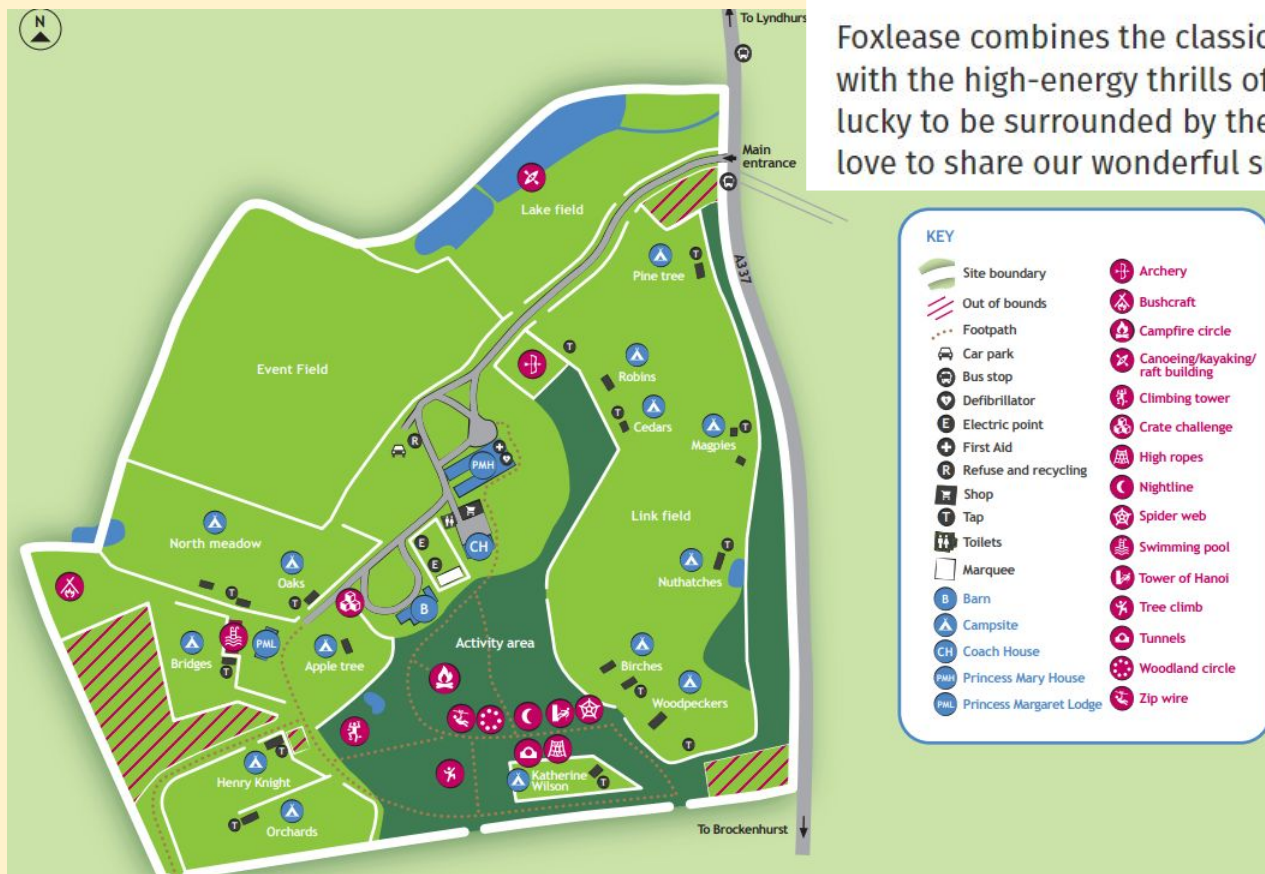
15th - 17th June



# Where we will be.

## Welcome to Foxlease

Foxlease combines the classic charm of a Georgian manor house with the high-energy thrills of our adventurous activities. We're lucky to be surrounded by the beauty of the New Forest – and we love to share our wonderful surroundings with our guests. Why not



# Staffing

Miss Vincent



Mrs Connelly



Miss Blake



Mrs Hixon



Miss Salter

Miss Seed

Mrs Holloway

Mr Hinton

Mrs Bell (Miss Broadway)



# Activities

Kayaking/canoe



Orienteering



Zip wire



Gladiator

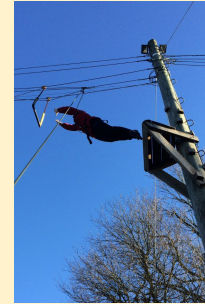
Fencing



Archery



Leap of faith



Climbing tower



# A typical day

Xxxx	Wake up
Xxxx	Breakfast
Xxxx	Activity 1
Xxxx	Activity 2
Xxxx	Lunch
Xxxx	Activity 3
Xxxx	Activity 4
Xxxx	Dinner
Xxxx	Evening Activity
Xxxx	Lights Out

We will be staying in 3 different houses on the site.

## Princess Mary House





# Princess Margaret Lodge



# The Coach House





# Sleeping arrangements

There are a mixture of 2, 3, 4, 6 and 8 beds in a room and one dormitory. Your child has been asked to choose 4 people that they would be happy to share a room with and we have guaranteed that they will be with one of these people.

We will not be able to let them know who they are with until we arrive as if children are in a 2 bedroom and their roommate drops out for any reason then we will need to reallocate, so the room list won't be finalised until we are actually on the coach!

# Bed wetting!

It happens! The adults will be on hand to help them change sheets etc.

However, if your child is **likely** to wet the bed please have a discrete word with their class teacher at the end of the meeting and we can

1. Make sure that they are not sleeping on the top bunk
2. Pop an absorbent bed mat under their sheet

# Eating

The children will get 3 meals a day whilst resident at Foxlease:

- Breakfast
- Lunch
- Evening Meal

We will be eating in the Main House dining hall in 2 sittings for each meal. It will be a buffet service with meat and vegetarian options.

Breakfast is a continental self service buffet.





# Showers

All the children will be asked to shower before they go to bed, but NOT get their hair wet.

In the past, children with long hair have found it useful to bring a **shower cap**.



# Pocket money and tuck shop

The children will have the opportunity to visit the tuck shop on the Wednesday and Thursday afternoon. The shop sells sweets and drinks, as well as Foxlease souvenirs.

We suggest that they bring no more than £3 in a named purse or wallet. These will be kept by the adults.

# Wednesday 15th June

Arrive at school at normal time. We will be departing at 11.30am.

Come straight to the hall with your suitcase. Children in group 1 need to be ready to do a 'getting wet' activity.

Find your class teacher and hand over your tuck money in a named wallet or purse and any medicine you will need while we are away (also clearly labelled.)

We will arrive at Foxlease at 12pm.

Once we arrive we will have a tour, have our lunch and start our afternoon activities.

Please bring a packed lunch to eat when we arrive. This needs to be in disposable packing - no lunch boxes please! (However, water bottles are essential.)



# Kit List

- Get your child to help pack so they know what is being brought. (Some parents like to pack a day's clothing in individual, labelled plastic bags to help children dress.)
- Pack lots of spare clothing – all the activities are outdoors so will need something dry to change into. Some of the activities require a long sleeved top - all children must have this to take part in some of the activities!
- Bring usual toiletries (shower gel, toothbrush and paste) and a towel that can be used to dry off after wet/muddy activities.
- We may be outside until 2100 please bring suitable warm clothing. Layers are a good way to keep warm and easy to take off if they get too warm.

# Kit List

- Suitable footwear is essential (trainers). Please no wellies - they are not suitable for lots of the activities. Please have a pair that can get muddy and wet as well as dry pair.
- Everyone needs a small bag/rucksack to carry their daily bits and pieces. They will bring this on the coach with their lunch in it and use it for the rest of our stay. (PLEASE DON'T PACK IT IN THEIR CASE!)
- We recommend the children bring a book and/or a puzzle book so they have something to grab during any down time.
- No jewellery allowed. If earrings can't be removed they must be taped for the duration of the residential. If they are not taped, the child will not be allowed to take part in many of the activities.

# Kit List

- Long hair must be tied back for all activities. Please pack plenty of hair ties/bobbles/scrunchies.
- They may bring a small cuddly toy for bedtime but it will be their responsibility to look after it and it must travel in their suitcase.
- All meals will be provided, but you may choose to pack a few extra snacks for your child in their suitcase. No energy drinks please.
- Name everything!



# **Please no electronic devices.**

Children can bring board games to play in their rooms but these are their responsibility.

They may bring disposable cameras, but again these are their responsibility.



We will be back at school at 2.30pm on the Friday and you are welcome to collect your (very tired!) children at this time. Otherwise, it will be normal home time.