

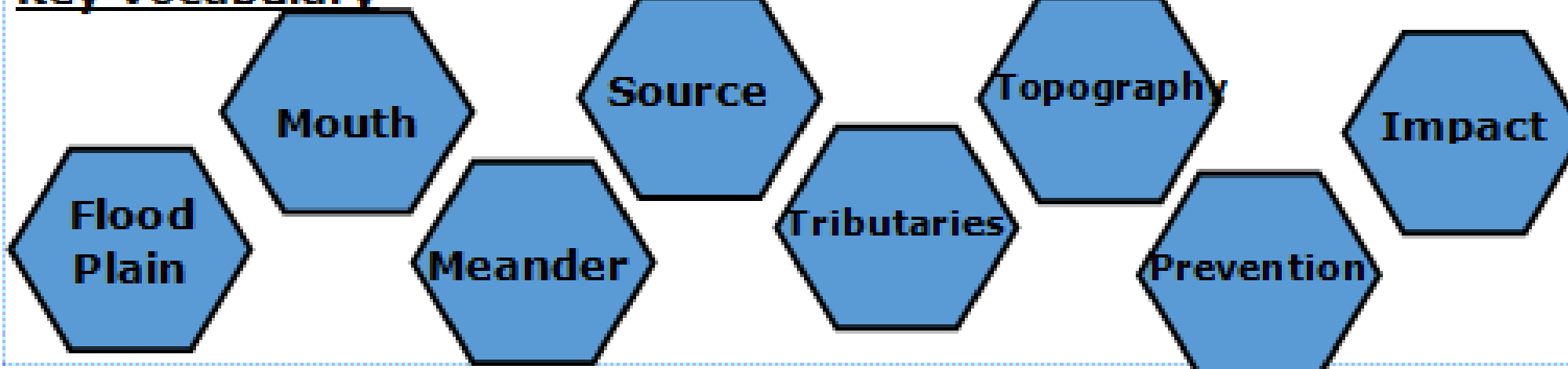
## What I already know...

How to use national maps to **locate** cities and counties.  
(Southampton Y3, Liverpool Y4)

Why **settlements** such as Southampton and Liverpool are located on coasts. (Defence, Trade)Y3/4

Settlements **change over time** because of human and physical **impact**.  
(Southampton Through Time Y3)

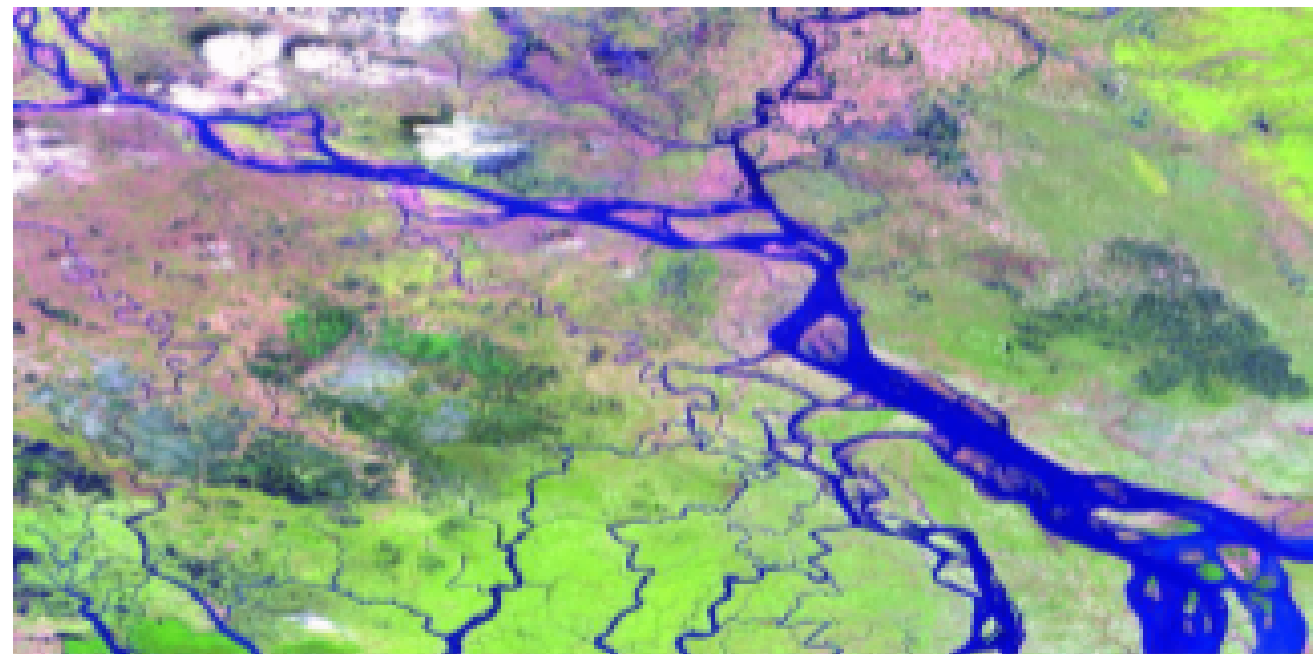
## Key Vocabulary



# The Power of Water



Use your **geography skills** to become an expert reporter on flooding across the world. Use your knowledge of flooding impact in different countries to support a fairer approach to clean water access in the world.



## I will learn...

- ⇒ The **physical** features of rivers.
- ⇒ How rivers **impact** the land and **humans**.
- ⇒ How to use a **range of maps** to describe geographical feature of Shrewsbury(UK) and Davenport (USA).
- ⇒ To compare flooding impacts in **UK, USA** and **Bangladesh**.



Make a difference in the world by raising money and campaigning for others—Water Aid Fair.

# Year 5 The Power of Water topic overview—Spring 2

## Topic: The Power of Water

What impact does flooding have on people around the world? Year 5 take a close look at the power of rivers; their enticements as places to settle by and the risks that living by a river can have for people across the world.

**HOOK:** River Day—exploring the features of an actual river.

**OUTCOME:** Water Aid Fair

## Driving Subject(s): Geography

- understand geographical similarities and differences through the study of human and physical geography of rivers of a region of the United Kingdom (Severn), a region in a Asian country(Ganges), and a region within North or South America (Mississippi river basin)
- Physical geography: river features and their environmental impacts.
- Human: distribution of clean water, settlement types and impacts of flooding on settlements and people
- Geographical skills and fieldwork □ use maps, atlases, globes and digital/computer mapping to locate countries and describe river features.
- use fieldwork to observe, measure, record and present the human and physical features in the local area using a range of methods, including sketch maps, plans and graphs, and digital technologies.

## Applied Literacy:

- Newspaper report—impact of flooding on the Mississippi
- Report—Flooding Impact in Bangladesh—why do they need aid?
- Emotive narrative—story of a Bangladesh child effected by contaminated floodwater

## Applied Mathematics:

- Analysis of data—comparing trends across the world
- Data representation—creating and using data in a report

## Curriculum Links:

- PE—River Dance
- Science—Working scientifically—STEM day investigating use of dykes to stem flooding

## SMSC:

- Supporting a world cause—being a global citizen
- Moral—comparing impact of funding vs impact of flooding—fair distribution of wealth?
- Cultural—a case study into a different country.

## Community links/Enterprise/

### Experiences:

- River Trip—Geography field work—Features of a river
- Water Aid—SJS community—promoting a cause
- STEM day—dykes